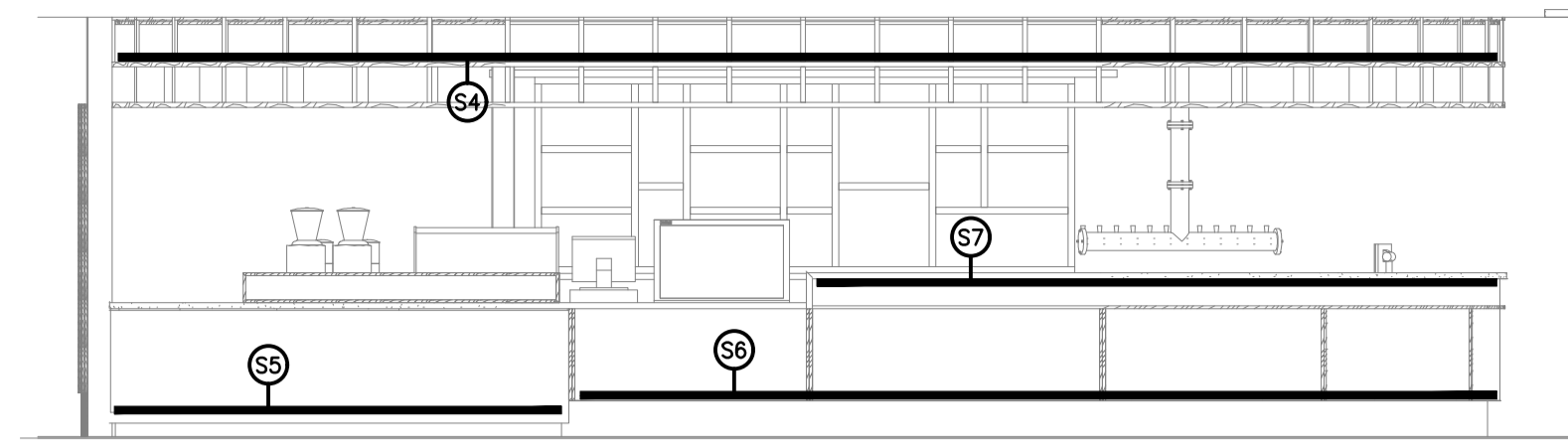
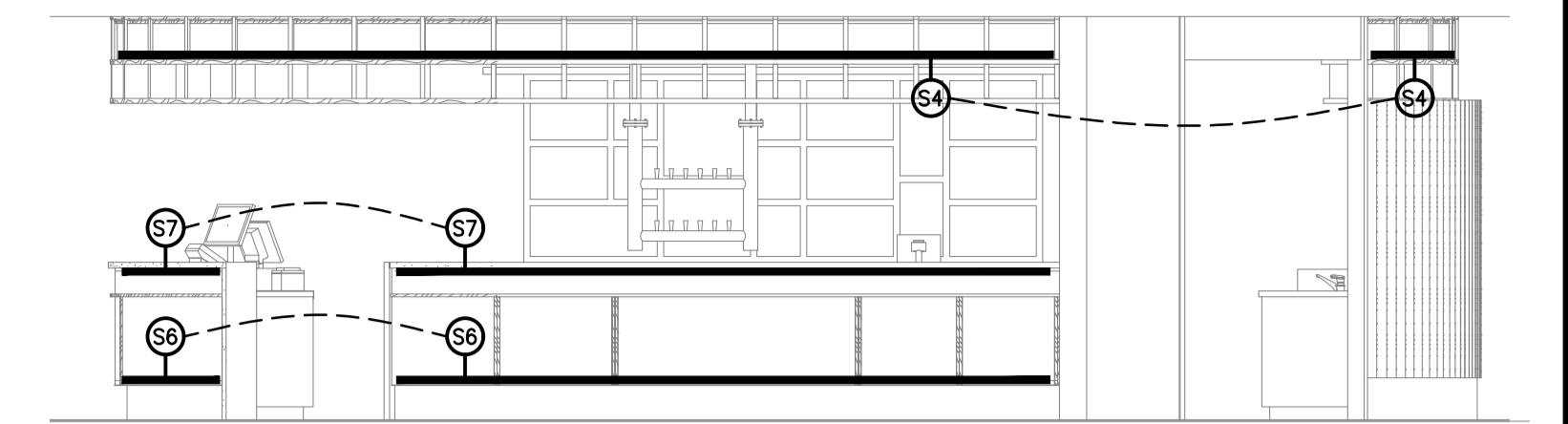


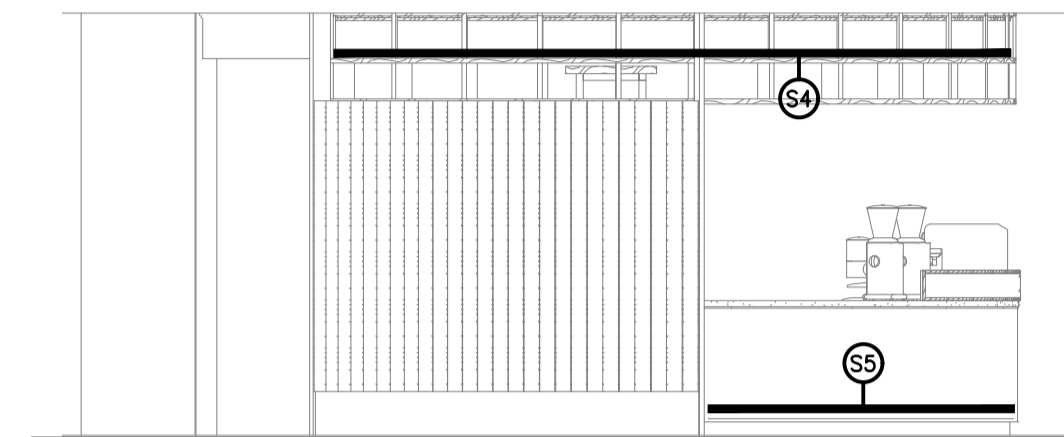
KEY PLAN



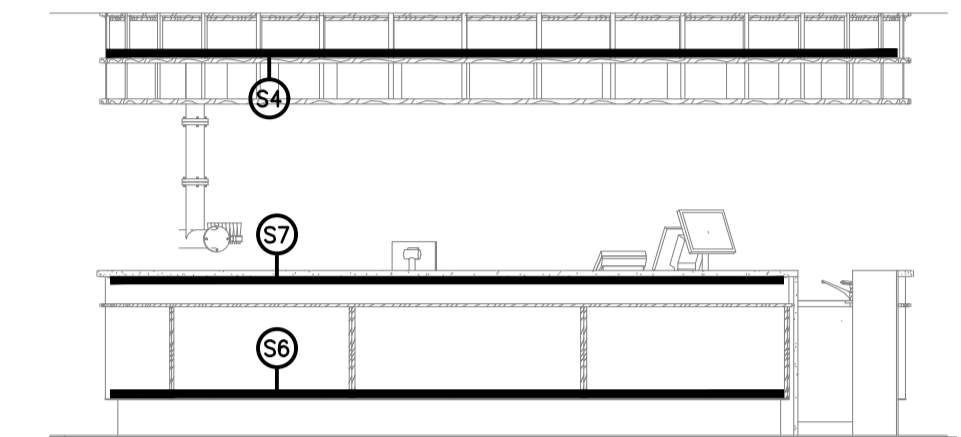
DETAIL A
BAR COUNTER ELEVATION
SCALE 1: 50



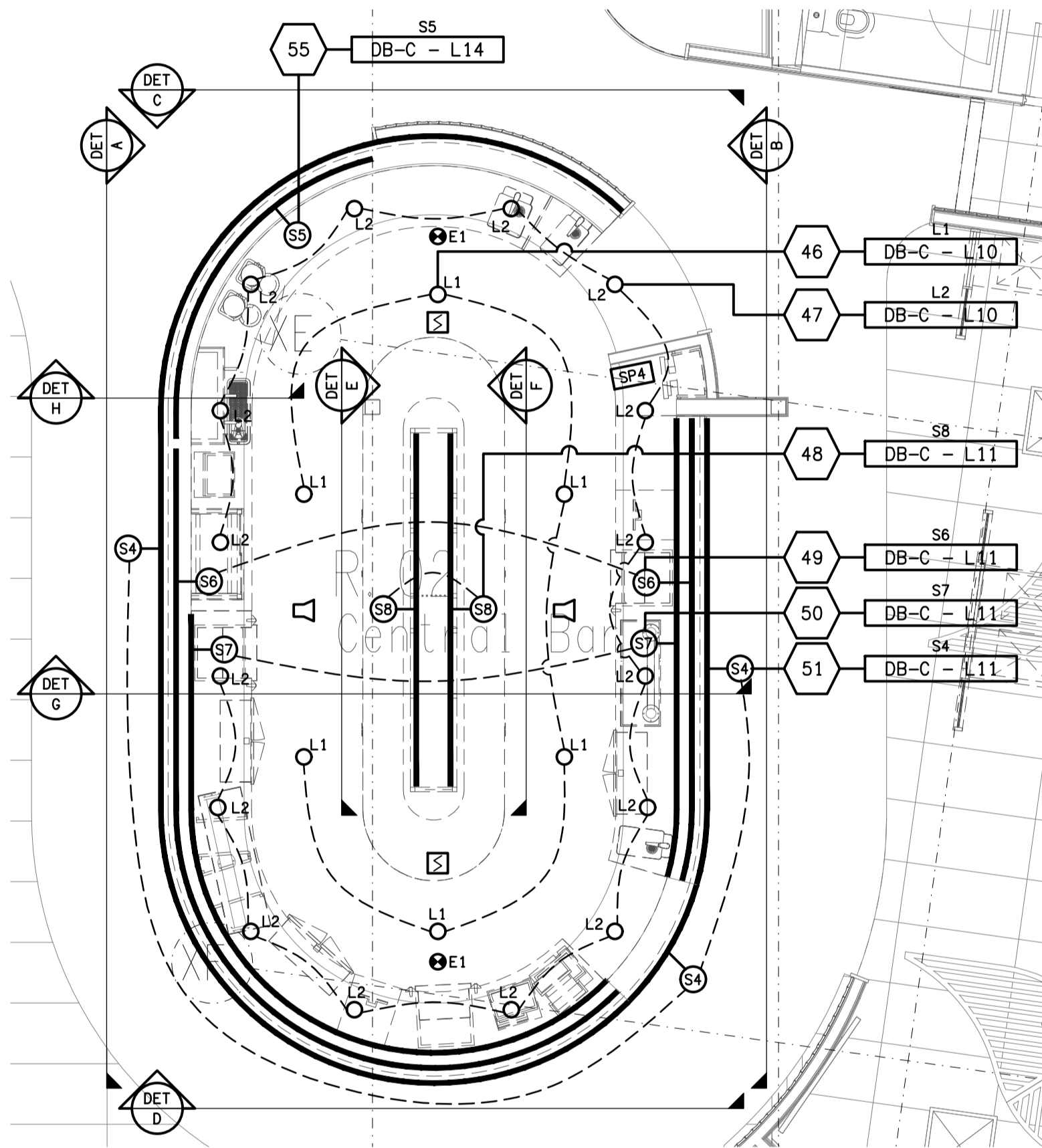
DETAIL B
BAR COUNTER ELEVATION
SCALE 1: 50



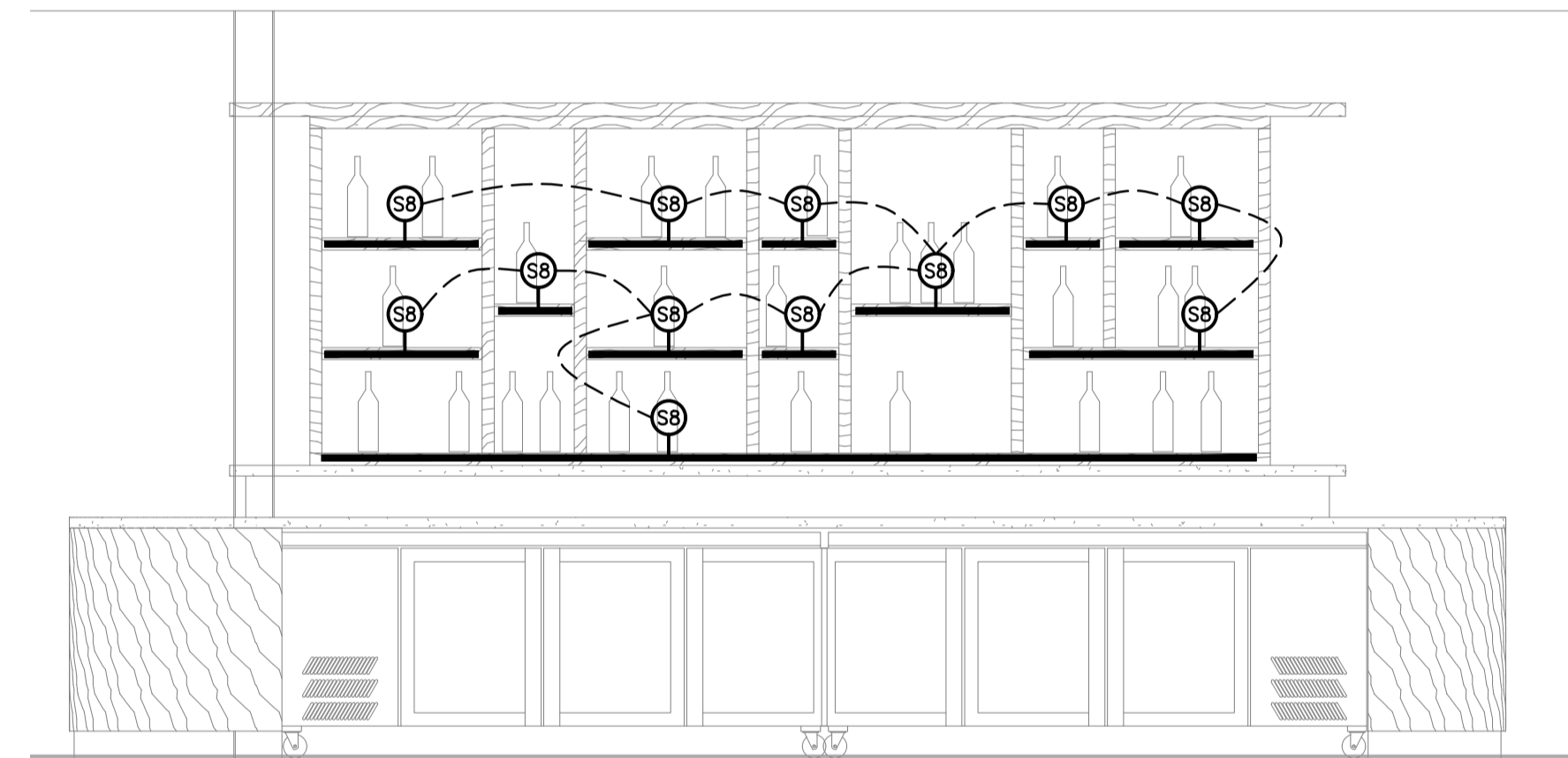
DETAIL C
BAR COUNTER ELEVATION
SCALE 1: 50



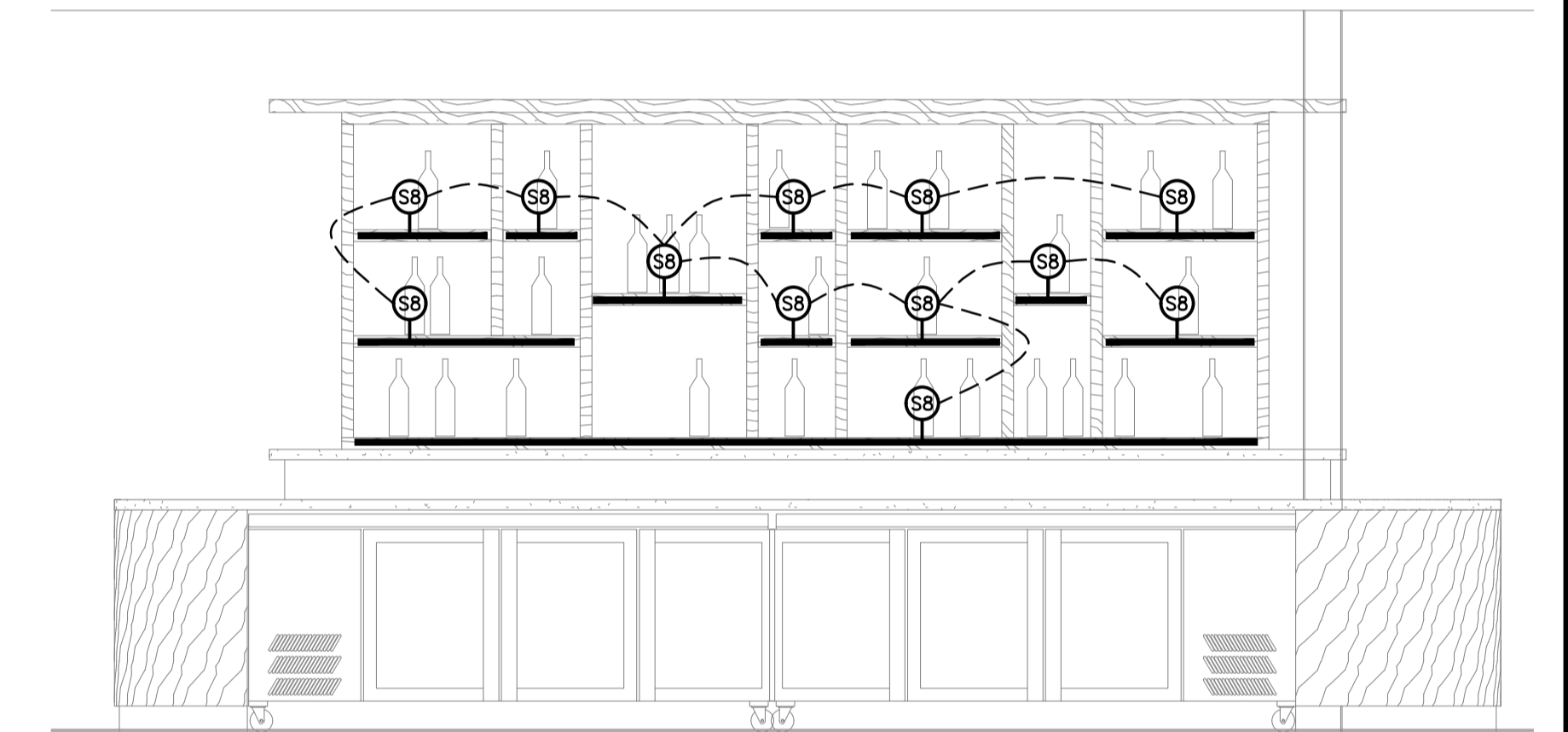
DETAIL D
BAR COUNTER ELEVATION
SCALE 1: 50



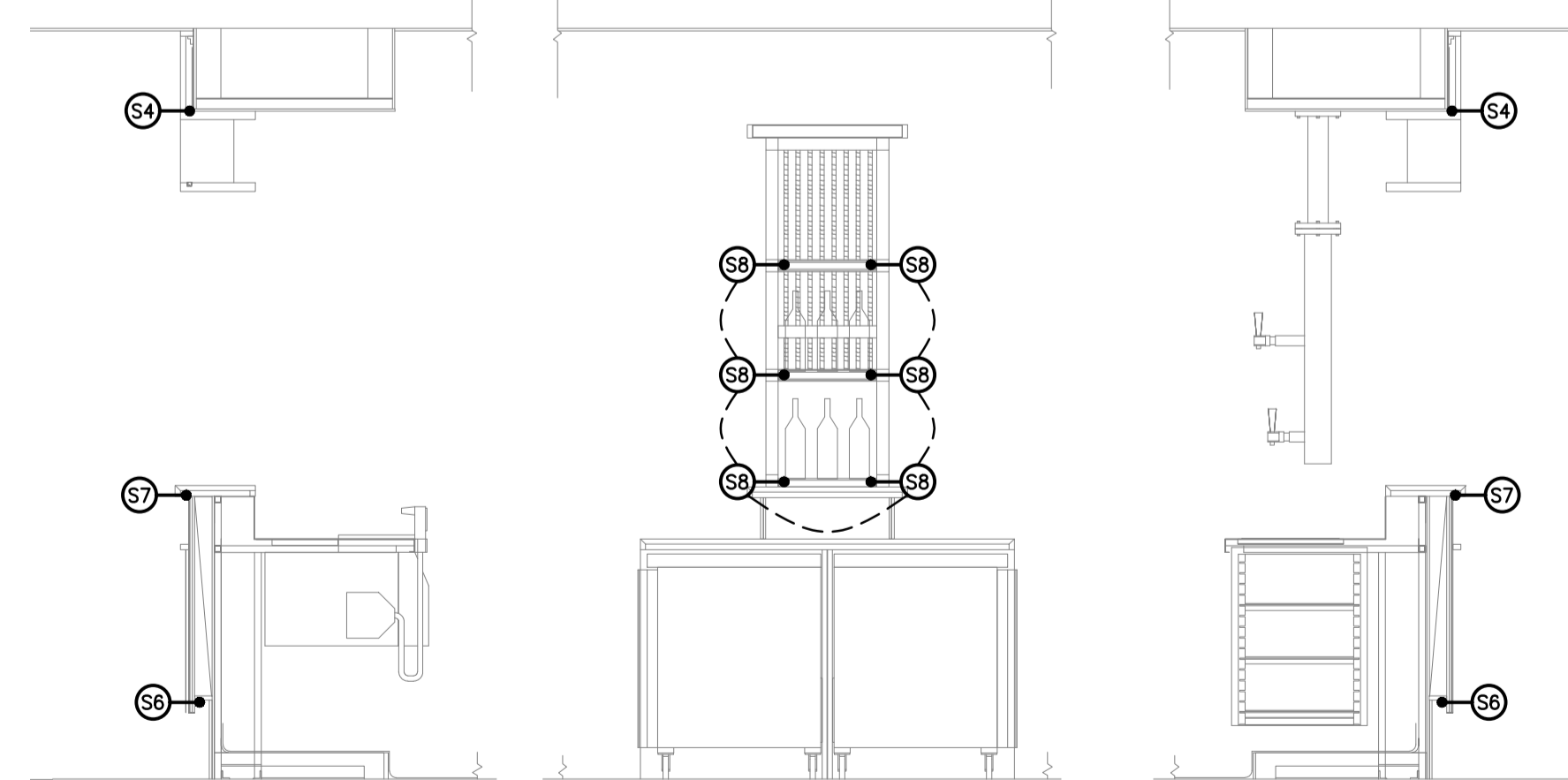
DETAIL 04
CENTRAL BAR REFLECTED CEILING PLAN
SCALE 1: 50



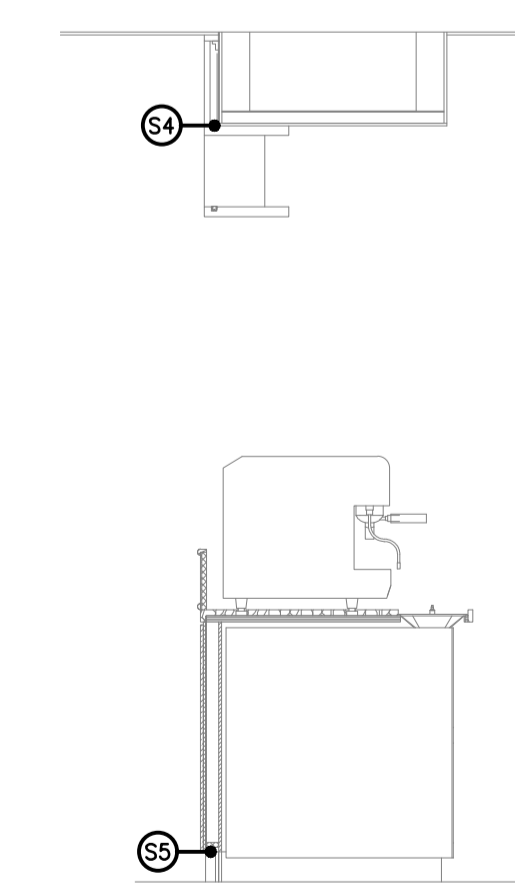
DETAIL E
DISPLAY CABINET ELEVATION
SCALE 1: 25



DETAIL F
DISPLAY CABINET ELEVATION
SCALE 1: 25



DETAIL G
BAR / DISPLAY CABINET SECTION
SCALE 1: 25



DETAIL H
BAR COUNTER SECTION
SCALE 1: 25

ELECTRICAL DESIGN GROUP BRISBANE
PTY LTD
ACN 092 710 793
TRADING AS:
ELECTRICAL DESIGN GROUP

THE COPYRIGHT OF THIS DRAWING
REMAINS THE PROPERTY OF THE
ELECTRICAL DESIGN GROUP.
USE FIGURED DIMENSIONS
IN PREFERENCE TO SCALE.
ALL DIMENSIONS TO BE
VERIFIED ONSITE.

ELECTRICAL DESIGN GROUP
ELECTRICAL BUILDING SERVICES CONSULTANTS
BRISBANE GOLD COAST

P.O. Box 15, Sherwood Q.4075
Phone: (07) 3278 4375
Email: brisbane@edg.net.au
Web: www.edg.net.au

PROJECT:
VICTORIA POINT SHARKS SPORTING CLUB

325 COLBURN AVENUE, VICTORIA POINT, QUEENSLAND

B	CONSTRUCTION	11/09/2023
REV.	DESCRIPTION:	DATE:

DRAWING:
ELECTRICAL SERVICES
CENTRAL BAR REFLECTED CEILING PLAN
& DETAILS

SCALE: 1:50 & 1:25	PROJECT NO: C2931a	DRAWING NO: E05	REVISION: B
-----------------------	------------------------------	---------------------------	-----------------------